

Coffee Table

Isamu Noguchi, 1944



The sculptor and designer Isamu Noguchi described the Coffee Table as his best furniture design – no doubt because it is reminiscent of his biomorphic sculptures in bronze and marble from the same period, translating the typical forms of the latter into a piece of sculptural furniture. The heavy plate glass top of the Coffee Table rests on two identical wooden elements placed at right angles.

Materials

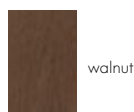
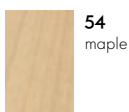
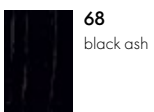
- **Table top:** heavy glass, 19 mm, ground rounded edges.
- **Solid wood base:** walnut with oiled finish, black ash with lacquered finish, maple with lacquered finish, rounded edges.
- **Origin of wood:** ash (*Fraxinus excelsior*) and maple (*Acer platanoides*) from Western Europe and/or Poland, walnut (*Juglans nigra*) from the USA, Western Europe and/or Poland.

DIMENSIONS



Coffee Table

SURFACES AND COLOURS



Base

